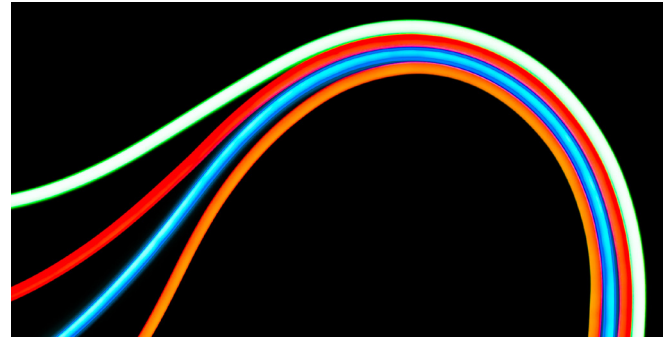


NEON SILHOUETTE

It's like neon, but better! This bendable, waterproof LED light strip utilizes modern LEDs but keeps the classic look of neon. Available in static white, static colors, and variable white options, our Neon Silhouette is designed to brave the elements in façade lighting and lettering.

- Flexible silicone LED tube creates vivid colors and bold statements
- Waterproof and UV resistant
- Sleek, flat design helps create elegant lighting solutions
- Assembled in USA



Applications:

Commercial Hospitality Residential
 Entertainment Museums Retail / Signage
 Healthcare Public Spaces

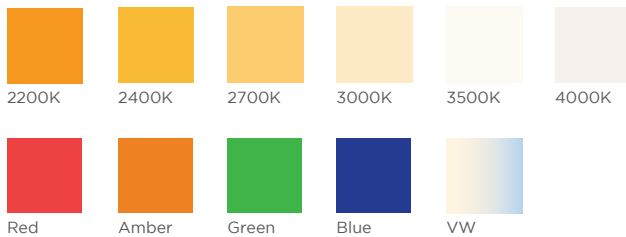


RoHS **IP68**

ORDERING GUIDE

Category	CRI	Ribbon Type & IP Rating	Wattage & Color	
NLS				
NLS - Neon Silhouette	0 - Static Color, Color Changing 90 - 90+ CRI Static White	SWS268 - Static White Series 2 IP68 SCS268 - Static Color Series 2 IP68 VWS268 - Variable White Series 2 IP68	3.022 - 3.0 W/ft 2200K 3.024 - 3.0 W/ft 2400K 3.027 - 3.0 W/ft 2700K 3.030 - 3.0 W/ft 3000K 3.035 - 3.0 W/ft 3500K 3.040 - 3.0 W/ft 4000K	3.0R - 3.0 W/ft Red 3.0G - 3.0 W/ft Green 3.0B - 3.0 W/ft Blue 3.0A - 3.0 W/ft Amber 3.0VW - 3.0 W/ft Variable White
Mounting	Power Feed			
1. Mounting Clips (Part #: NLSMOUNTCLIP)	1. End Feed 2. Side Feed 3. Bottom Feed			

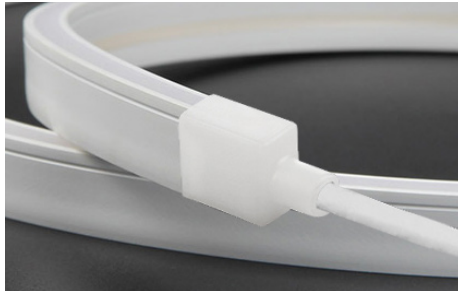
AVAILABLE COLORS AND COLOR TEMPERATURES



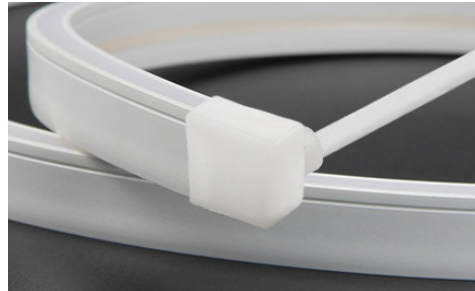
POWER FEED OPTIONS / SPECIFICATIONS / USAGE GUIDELINES

SPECIFICATIONS	NEON SILHOUETTE
Operating Voltage	24 V
Power Consumption	Static White, Static Colors, Variable White: 3.0 W/ft (9.8 W/m)
Protection Rating	IP68
Dimming	ELV / MLV / 0-10 Volt / DMX / Lutron A-Series 1% dimming LED drivers
Operating Temperature	-40° F to 140° F (-40° C to 60° C)
Color Temperatures / Colors	2200K, 2400K, 2700K, 3000K, 3500K, 4000K, Red, Green, Blue, Amber, Variable White
Lamp Life	50,000 Hours
Length	Static White / Static Color / Variable White: Up to 32 ft. 8 in. (10 m) 1.97 in (50 mm) increments
UV Resistant	UV tested in accordance with ISO 4892-3 with no visible change on the appearance of the sample
Minimum Bend Diameter	2 in (50 mm) Not Field Cuttable
CRI (white)	90+ for all Color Temperatures
Lumens	- 120 lm/ft (400 lm/m) (Static White version)

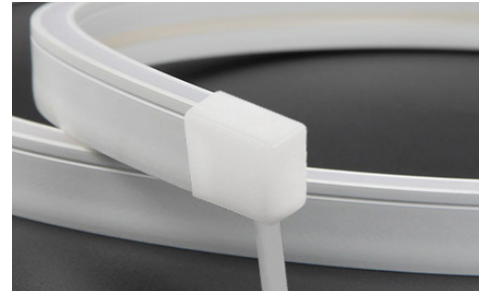
POWER FEED OPTIONS



End Feed - Power From End



Side Feed - Power From Side



Bottom Feed - Power From Bottom

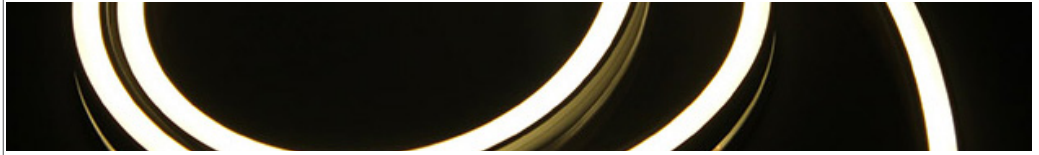
USAGE GUIDELINES

- When installing this product take into account the surface temperature of the material this product is mounted to. Many building surfaces which are exposed to direct sunlight exceed the 70° C/158° F maximum that our product is rated for. High risk locations like this should be avoided.
- This product is not intended to be submerged in pools and fountains and does not carry UL 676 certification to do so. Available for download at: www.GENLEDBrands.com/Acolyte
- Compatible with a wide variety of control products including the entire line of Lutron dimming systems.
- For use with GENLED Acolyte[®] drivers, triac dimming modules, and 0-10 modules.
- Use with non-GENLED Acolyte[®] triac, MLV or ELV drivers is not supported or warrantied
- Due to the cuttable points inside, NeonLyte cuttable lengths are generally longer or shorter than the customer requested length. Unless specified, NeonLyte is factory cut at the shorter cuttable point
- NeonLyte can be used in wet, outdoor locations around swimming pools and spa tubs, but not submerged in swimming pools and spa tubs.
- We reserve the right to make changes to product lineup, specifications, design and finishes at any time without notice.

GENLED Acolyte[®] does not warrant or represent that the information is free from errors or omission. The information may change without notice and GENLED Acolyte[®] is not in any way liable for the accuracy of any information printed and stored or in any way interpreted or used.

DIMENSIONS / DIAGRAMS

DIMENSIONS		NEON SILHOUETTE
FLEX CHANNEL		
IP68	Width (mounted in clip)	0.39 in (10 mm)
	Length	Varies (see dimensions on pg. 2)
	Height (mounted in clip)	0.81 in (20.5 mm)



DIAGRAMS		NEON SILHOUETTE
TUBE		<p>TUBE OUTER HEIGHT: 0.47 in / 12.0 mm TUBE OUTER WIDTH: 0.24 / 6.0 mm</p> <p>END CAP HEIGHT: 0.55 in / 14 mm END CAP WIDTH: 0.31 in / 8.0 mm</p>
MOUNTING CLIP		<p>MOUNTING CLIP OVERALL HEIGHT: 0.39 in / 10.0 mm MOUNTING CLIP LENGTH: 0.60 in / 15.2 mm MOUNTING CLIP WIDTH: 0.32 in / 8.1 mm MOUNTING CLIP SCREW TAP DIAMETER: 0.11 in / 2.8 mm MOUNTING CLIP THICKNESS: 0.05 in / 1.3 mm</p> <p>Use (2) mounting clips per foot unless specific shapes require more *Recommended mounting clip screw size: #4-40</p>

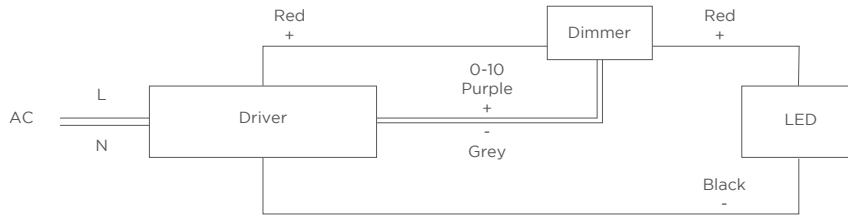
DISCLAIMER

When installing this product take into account the surface temperature of the material this product is mounted to. Many building surfaces which are exposed to direct sunlight exceed the 70° C/158° F maximum that our product is rated for. High-risk locations like this should be avoided.

This product is not intended to be submerged in pools and fountains and does not carry UL 676 certification to do so.

WIRING DIAGRAMS

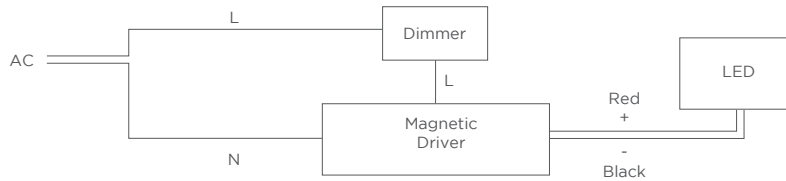
0-10V



WIRE COLORS PER RIBBONLYTE COLOR

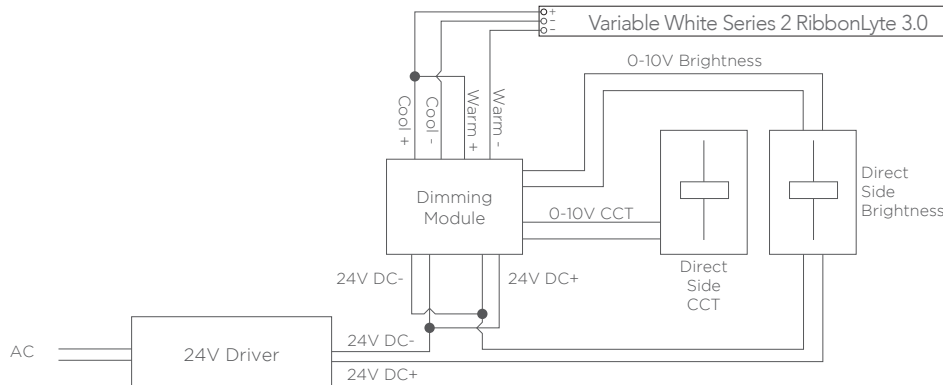
STATIC WHITE +
STATIC COLOR
Red Wire (+) Positive
Black Wire (-) Negative

MAGNETIC + ELV



VARIABLE WHITE
Black (+) Positive
Red Wire (-) goes to Warm White Channel
Green Wire (-) goes to Cool White Channel

2-CHANNEL DIMMING WIRING DIAGRAM



DMX WIRING DIAGRAM - COMPATIBLE WITH ALL MODELS OF VARIABLE WHITE RIBBONLYTE

